

The following pages detail the products required to install a 'Flat tape' lightning protection system. Additionally, accessories are also available.

Details of the flat tape conductors can be found in the Conductors section.

Air rod

Rod length	Rod diameter	Thread size	Material	Weight each	Part No.
500mm	15mm	M16	Copper	0.73kg	RA215 [†]
1000mm	15mm	M16	Copper	1.51kg	RA225 [†]
1500mm	15mm	M16	Copper	2.35kg	RA230 NEW
2000mm	15mm	M16	Copper	3.00kg	RA240
3000mm	15mm	M16	Copper	4.70kg	RA250 NEW
500mm	15mm	M16	Aluminium	0.29kg	RA015
1000mm	15mm	M16	Aluminium	0.53kg	RA025
1500mm	15mm	M16	Aluminium	0.80kg	RA030 NEW
2000mm	15mm	M16	Aluminium	1.06kg	RA040
3000mm	15mm	M16	Aluminium	1.60kg	RA050 NEW

Manufactured from high conductivity hard drawn copper or aluminium, with rolled threads. Supplied complete with locknut.

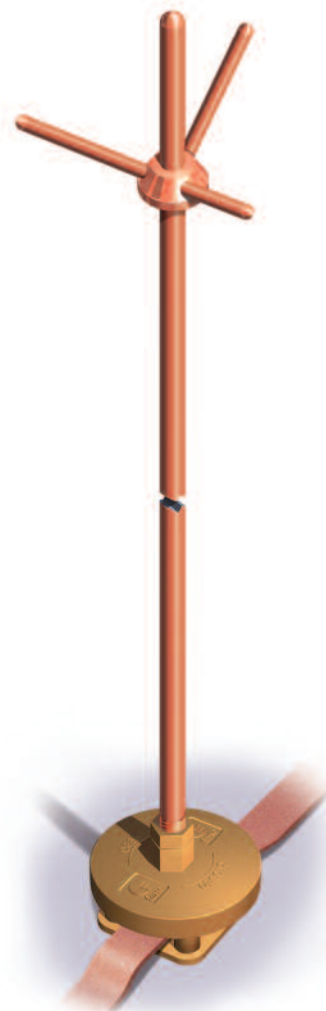
"Field Trials in the United States, carried out over many years research have confirmed that blunt air rods are struck by lightning in preference to taper pointed air rods."

"Lightning rod improvement studies" by C B Moore, W Rison, J Mathis, G Aulich. Journal of Applied Meteorology, May 2000.

Note: during high winds and extreme weather conditions air rods over 1000mm long can be subjected to fatigue mechanisms. It is therefore recommended that additional supports are considered before installation.



BS EN 50164-2
†UL96 (RA215, RA225)



Multiple point

Rod diameter	Material	Weight each	Part No.
15mm	Copper	0.27kg	RA600

Manufactured from high conductivity hard drawn copper, suitable for use with copper air rods only.

Air rod base

Rod diameter	Thread size	Maximum conductor width	Material	Weight each	Part No.
15mm	M16	25mm	Copper	0.43kg	SD105-H [†] NEW
15mm	M16	25mm	Aluminium	0.14kg	SD003-H NEW

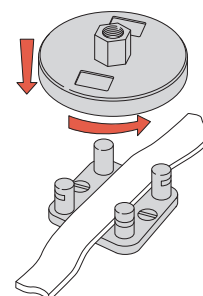
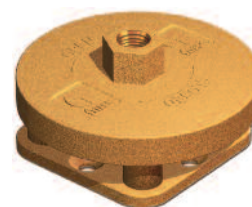
Manufactured from high quality copper and aluminium alloys. Simple to install, providing an effective connection between air rod and air termination tape.

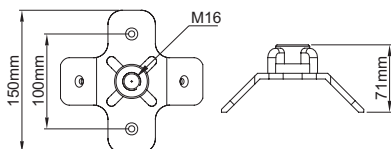


BS EN 50164-1 Class H
†UL96 (SD105-H)



Fix using countersunk wood screws (Part no. SW005 or SW105) and wall plugs (Part no. PS305). See Accessories.





Ridge saddle

Rod diameter	Thread size	Maximum conductor width	Material	Weight each	Part No.
15mm	M16	31mm	Copper	1.07kg	SD115

For supporting lightning conductor air rods on ridges.



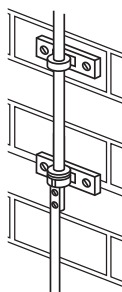
BS EN 50164-1 Class H



Fix using countersunk wood screws 1½" No. 10 or M6 (Part no. SW005 or SW105) and wall plugs (Part no. PS305) – see Accessories.



Tightening torque 15Nm



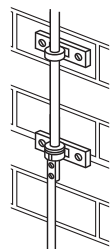
Rod brackets

Rod diameter	Rod material	Weight each	Part No.
15mm	Copper	0.90kg	BR105
15mm	Aluminium	0.28kg	BR005

Manufactured from high quality copper and aluminium alloys. Simple to install, providing an effective means of mounting an air rod on a vertical surface e.g. chimney stack. Use in conjunction with a rod to tape coupling.



Fix using roundhead wood screws 1½" x no. 12 or M8 and wall plugs



Rod to tape coupling

Rod diameter	Thread size	Rod material	Weight each	Part No.
15mm	M16	Copper	0.23kg	CG600
15mm	M16	Aluminium	0.08kg	CG500

Manufactured from high quality copper and aluminium alloys. Provides an effective connection between air rod and air termination tape. Use in conjunction with rod brackets.



BS EN 50164-1 Class H



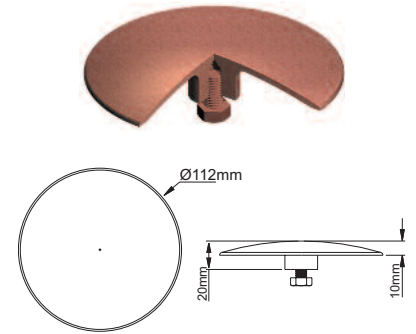
Tightening torque 7Nm

Strike pad

Conductor material	Weight each	Part No.
Copper	0.41kg	PL010
Aluminium	0.13kg	PL005
Copper stem for use with PL010	0.07kg	SM010

Manufactured from high quality copper and aluminium alloys. Designed to provide an exposed attractive point on conductor systems hidden/embedded in the building's fabric e.g. below the tiles of a pitched roof.

Supplied with setscrew for attachment of lightning conductors.



Free standing air rods NEW

Free-standing air rods combine Furse copper/aluminium air rods or stainless steel interception poles with concrete bases and frames (as required) to form a complete unit.

Individual components are detailed over the next few pages. Free standing air rods are wind speed specific. Please reference the chart on the next page for confirmation of the correct number and type of base, and type of frame for each rod height.

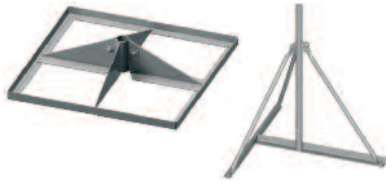
Free standing interception pole

Pole height	Pole diameter	Pole make up	Weight each	Part No.
3m	10 - 42mm	2 pce	5.0kg	912000-FU
3.5m	10 - 42mm	2 pce	5.5kg	912001-FU
4m	10 - 42mm	2 pce	7.0kg	912002-FU
4.5m	10 - 42mm	2 pce	9.2kg	912003-FU
5m	10 - 42mm	2 pce	10.0kg	912004-FU
5.5m	10 - 42mm	2 pce	10.6kg	912005-FU
6m	10 - 60mm	3 pce	18.0kg	912006-FU
6.5m	10 - 60mm	3 pce	19.0kg	912007-FU
7m	10 - 60mm	3 pce	23.5kg	912008-FU
7.5m	10 - 60mm	3 pce	26.0kg	912009-FU
8m	10 - 60mm	3 pce	28.7kg	912010-FU
9m	10 - 60mm	3 pce	30.5kg	912011-FU
10m	10 - 60mm	3 pce	35.5kg	912013-FU

For construction of interception air rods from 3 to 10m in height comprising interception pole, support frame and concrete bases. All interception poles are grade 304 stainless steel with aluminium interception tip. Multi-component, stackable system with screw retention. Supplied with 3 terminal lugs for base frame connection.

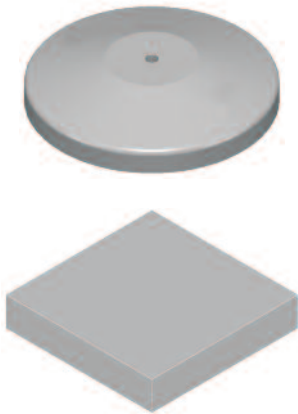


Flat tape system



Base frame

Frame type	Dimensions	Weight each	Part No.
Square base	650 x 650mm	7kg	499000-FU
Tripod base	1350 x 1350mm	8kg	499005-FU
Tripod base	1850 x 1850mm	24.5kg	499006-FU
H shaped base	1850 x 1850mm	39.5kg	499007-FU



Concrete base

Description	Weight each	Part No.
Square concrete base 300 x 300 x 60 mm	12kg	499100-FU
Square concrete base 300 x 300 x 80 mm	16kg	499101-FU
Circular concrete base with M16 insert	12kg	103103-FU
Circular concrete base with M16 insert	16kg	103101-FU
Circular concrete base with M16 insert	20kg	103110-FU
Circular concrete base with M16 insert	25kg	103118-FU

Accessories

Protective polyethylene tray for circular concrete blocks	0.4kg	103102-FU
Stainless steel clamp for connecting 25 x 3 mm copper tape to 5 – 19 mm thickness steel	0.55kg	919828-FU

Free standing air rod selection

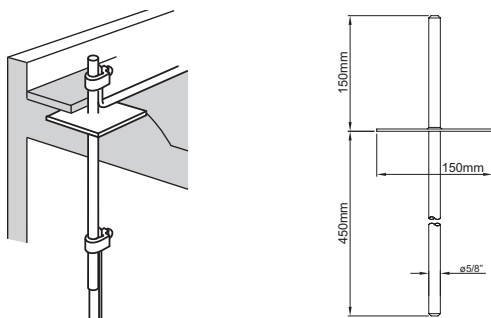
Free standing air rod selection is dependent on height required and location wind speed. Order interception pole, frame (where required) and correct number of bases for full construction of rod. For further information, contact Furse for separate datasheet.

Rod height	Interception pole Part No.	Frame (where required) and Base Part No. for windspeeds			
		<130km/h	<150km/h	<170km/h	<190km/h
0.5m	RA215 or RA015	103101-FU	103101-FU	103101-FU	103101-FU
1m	RA225 or RA025	103101-FU	103101-FU	103101-FU	103101-FU
1.5m	RA230 or RA030	103110-FU	103110-FU	103110-FU	103110-FU
2m	RA240 or RA040	103110-FU	103110-FU	103110-FU	103110-FU
3m	912000-FU	499000-FU / 4 x 499100-FU	499000-FU / 4 x 499100-FU	499000-FU / 4 x 499100-FU	499000-FU / 4 x 499100-FU
3.5m	912001-FU	499000-FU / 4 x 499100-FU	499000-FU / 4 x 499100-FU	499000-FU / 4 x 499101-FU	499000-FU / 4 x 499101-FU
4m	912002-FU	499000-FU / 4 x 499100-FU	499000-FU / 4 x 499101-FU	499000-FU / 8 x 499100-FU	499000-FU / 8 x 499101-FU
4.5m	912003-FU	499005-FU / 3 x 103101-FU	499005-FU / 3 x 103110-FU	499005-FU / 3 x 103118-FU	499006-FU / 3 x 103103-FU
5m	912004-FU	499005-FU / 3 x 103101-FU	499005-FU / 3 x 103110-FU	499005-FU / 3 x 103118-FU	499006-FU / 3 x 103103-FU
5.5m	912005-FU	499005-FU / 3 x 103110-FU	499005-FU / 3 x 103118-FU	499006-FU / 6 x 103103-FU	499006-FU / 3 x 103103-FU
6m	912006-FU	499006-FU / 6 x 103103-FU	499006-FU / 6 x 103103-FU	499006-FU / 6 x 103103-FU	499006-FU / 6 x 103101-FU
6.5m	912007-FU	499006-FU / 6 x 103103-FU	499006-FU / 6 x 103103-FU	499006-FU / 6 x 103101-FU	499006-FU / 6 x 103118-FU
7m	912008-FU	499006-FU / 6 x 103103-FU	499006-FU / 6 x 103101-FU	499006-FU / 6 x 103110-FU	on request
7.5m	912009-FU	499006-FU / 6 x 103101-FU	499006-FU / 6 x 103110-FU	499006-FU / 6 x 103118-FU	on request
8m	912010-FU	499006-FU / 6 x 103110-FU	499006-FU / 6 x 103118-FU	499007-FU / 10 x 103118-FU	on request
9m	912011-FU	499007-FU / 10 x 103118-FU	499007-FU / 10 x 103118-FU	499007-FU / 10 x 103118-FU	on request
10m	912013-FU	499007-FU / 10 x 103118-FU	499007-FU / 10 x 103118-FU	on request	on request

Puddle flange

Material	Weight each	Part No.
Copper	1.54kg	PF105
Aluminium	0.50kg	PF005

Permits lightning conductors to pass through flat roofs without damaging the waterproof nature of the roof.



DC tape clip

Use with bare copper

Conductor size	Weight each	Part No.
20 x 3mm	0.06kg	CP205
25 x 4mm	0.07kg	CP216
30 x 5mm	0.10kg	CP227
38 x 5mm	0.12kg	CP245
40 x 4mm	0.14kg	CP241
50 x 4mm	0.15kg	CP256

Made from high quality copper alloys.

Use with PVC covered copper

Conductor size	Weight each	Part No.
25 x 3mm	0.10kg	CP215
25 x 6mm	0.13kg	CP225
50 x 6mm	0.26kg	CP265

Made from high quality copper alloys.

Use with lead covered copper

Conductor size	Weight each	Part No.
25 x 3mm	0.20kg	CP305

Made from high quality copper alloys.

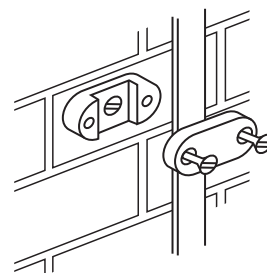
Use with bare aluminium

Conductor size	Weight each	Part No.
20 x 3mm	0.02kg	CP105

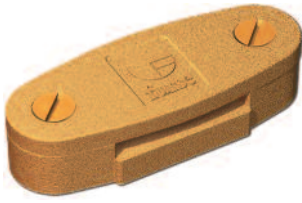
Use with PVC covered aluminium

Conductor size	Weight each	Part No.
25 x 3mm	0.04kg	CP115
50 x 6mm	0.06kg	CP130

Made from high quality aluminium alloys.



Fix using countersunk wood screws 1½" No. 10 or M6 (Part no. SW005 or SW105) and wall plugs (Part no. PS305) – see Accessories.



NEW Swing lid DC tape clip

Use with bare copper

Conductor size	Weight each	Part No.
25 x 3mm	0.07kg	CP210-H†
25 x 6mm	0.08kg	CP220-H†

Use with bare aluminium

Conductor size	Weight each	Part No.
25 x 3mm	0.03kg	CP110-H
25 x 6mm	0.04kg	CP120-H

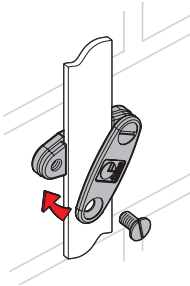
DC tape clips manufactured from high quality copper and aluminium alloys for excellent corrosion resistance and high pull off loads.



†UL96 (CP210-H, CP220-H)



Fix using countersunk wood screws 1½" No. 10 or M6 (Part no. SW005 or SW105) and wall plugs (Part no. PS305) – see Accessories.



NEW Adjustable DC tape clip

Conductor size	Weight each	Part No.
31 x 3mm and 31 x 6mm – use with bare copper	0.10kg	CP230-H
38 x 3mm, 38 x 6mm and 40 x 6mm – use with bare copper	0.12kg	CP240-H
50 x 3mm and 50 x 6mm – use with bare copper	0.16kg	CP260-H†
50 x 6mm – use with bare aluminium	0.05kg	CP125-H

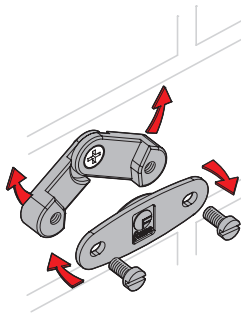
DC tape clips manufactured from high quality copper and aluminium alloys for excellent corrosion resistance and high pull off loads.



†UL96 (CP260-H)



Fix using countersunk wood screws 1½" No. 10 or M6 (Part no. SW005 or SW105) and wall plugs (Part no. PS305) – see Accessories page 63.



Non-metallic DC tape clip

Use with bare tape

Conductor size	Colour	Weight each	Part No.
20 x 3mm	Brown	0.01kg	CP005
20 x 3mm	Grey	0.01kg	CP010
25 x 3mm	Brown	0.01kg	CP015
25 x 3mm	Grey	0.01kg	CP020
38 x 5mm	Brown	0.01kg	CP060*
50 x 6mm	Brown	0.02kg	CP065*

Use with PVC covered tape

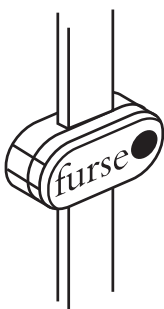
Conductor size	Colour	Weight each	Part No.
25 x 3mm	Brown	0.01kg	CP025
25 x 3mm	Black	0.01kg	CP030
25 x 3mm	Green	0.01kg	CP035
25 x 3mm	Grey	0.01kg	CP040
25 x 3mm	Stone	0.01kg	CP045
25 x 3mm	White	0.01kg	CP050

Manufactured from high grade Polypropylene, UV stabilised against degradation by sunlight and non-brittle to prevent cold weather damage. Available in six colours to match bare and PVC covered copper and aluminium tapes. This unique design provides easy installation and resists high pull off loads.



Fix using countersunk wood screws 1½" No. 10 or M6 (Part no. SW005 or SW105) and wall plugs (Part no. PS305) – see Accessories.

* Not as illustrated.



Bitumen felt roof clip

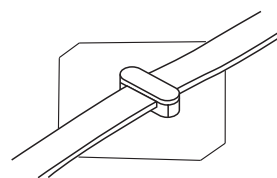
Use with bare tape

Conductor size	Colour	Weight each	Part No.
25 x 3mm	Brown	0.09kg	FP015
25 x 3mm	Grey	0.09kg	FP020

Use on bitumen felt roofing only

Use with PVC covered tape

Conductor size	Colour	Weight each	Part No.
25 x 3mm	Brown	0.09kg	FP025
25 x 3mm	Black	0.09kg	FP030
25 x 3mm	Green	0.09kg	FP035
25 x 3mm	Grey	0.09kg	FP040
25 x 3mm	Stone	0.09kg	FP045
25 x 3mm	White	0.09kg	FP050



Tape clip

Use with bare copper

Conductor size	Weight each	Part No.
20 x 3mm	0.02kg	CP510
25 x 3mm	0.02kg	CP515

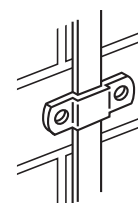
Use with PVC covered tape

Conductor size	Weight each	Part No.
25 x 3mm	0.02kg	CP517

Use with bare aluminium

Conductor size	Weight each	Part No.
20 x 3mm	0.01kg	CP405
25 x 3mm	0.01kg	CP410

Manufactured from pure copper or aluminium, these simple pressed clips are available in a range of sizes to suit bare and PVC covered copper and aluminium tapes.



Fix using roundhead wood screws 1½" No. 10 or M6 (Part no. **SW305** or **SW405** and wall plugs (Part no. **PS305**) – see Accessories.

Glue down DC tape clip

Use with bare tape

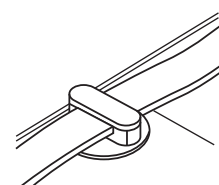
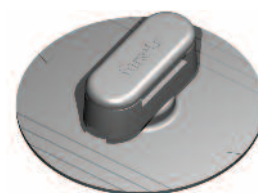
Conductor size	Colour	Weight each	Part No.
25 x 3mm	Brown	0.03kg	GD015
25 x 3mm	Grey	0.03kg	GD020

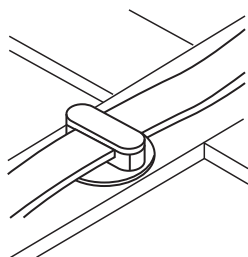
Use on clay roof tiles. Supplied in a box of 50 complete with adhesive.

Additional glue gun is required.

Use with PVC covered tape

Conductor size	Colour	Weight each	Part No.
25 x 3mm	Brown	0.03kg	GD025
25 x 3mm	Black	0.03kg	GD030
25 x 3mm	Grey	0.03kg	GD040
25 x 3mm	Stone	0.03kg	GD045
25 x 3mm	White	0.03kg	GD050





Adhesive DC tape clip

Use with bare tape

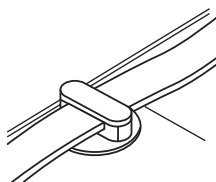
Conductor size	Colour	Weight each	Part No.
25 x 3mm	Brown	0.03kg	CA015
25 x 3mm	Grey	0.03kg	CA020

Use with PVC covered tape

Conductor size	Colour	Weight each	Part No.
25 x 3mm	Brown	0.03kg	CA025
25 x 3mm	Black	0.03kg	CA030
25 x 3mm	Grey	0.03kg	CA040
25 x 3mm	Stone	0.03kg	CA045
25 x 3mm	White	0.03kg	CA050

Designed to secure conductors to surfaces that cannot be penetrated by a screw. Ideal for aluminium, spangled galvanized steel, colour coated steel, glass, perspex, enamel and stainless steel etc. Manufactured from high grade plastic, UV stabilised against degradation by sunlight and non-brittle to prevent cold weather damage.

Use on surfaces other than PVC roofing.



Weldable DC tape clip

Use with bare tape

Conductor size	Colour	Weight each	Part No.
25 x 3mm	Brown	0.03kg	CW015
25 x 3mm	Grey	0.03kg	CW020

Use with PVC covered tape

Conductor size	Colour	Weight each	Part No.
25 x 3mm	Brown	0.03kg	CW025
25 x 3mm	Black	0.03kg	CW030
25 x 3mm	Grey	0.03kg	CW040
25 x 3mm	Stone	0.03kg	CW045
25 x 3mm	White	0.03kg	CW050

Provides a secure means of fixing conductors to single ply PVC roof membranes. Manufactured from high grade PVC, UV stabilised against degradation by sunlight and non-brittle to prevent cold weather damage.

For dressing tool, see separate datasheet.

Clips are available for Polypropylene, Polyethylene and other roof membranes. Please contact Furse for advice.



Universal welding solvent, Cleaning solution and Surface primer

Description	Weight each	Part No.
Universal welding solvent 500ml spray applicator (sufficient for application of approx 200 clips). Use with Furse weldable clips only.	0.57kg	CW905
Cleaning solution (Acetone) 500ml spray applicator. For cleaning lacquered roofing membranes.	0.62kg	CW999
Surface primer 250ml spray applicator (sufficient for application of approx 500 clips). Use with Furse adhesive clips only.	0.24kg	CA900

Solvent and surface primer cannot be supplied outside the UK. For overseas projects, please contact Furse for advice.

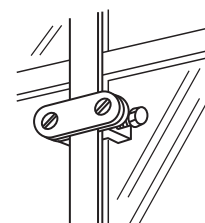
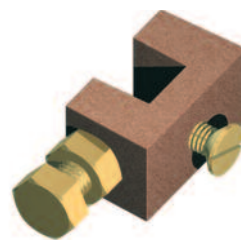
CoSHH Datasheets available on request.

Glazing bar holdfast

Conductor material	Maximum glazing bar width	Weight each	Part No.
Copper	12mm	0.11kg	HF705
Aluminium	12mm	0.05kg	HF710

Manufactured from high quality copper and aluminium alloys. Simple to install, providing secure anchorage to thin metallic sections that cannot be drilled e.g. window mullions, angle iron etc. Once fixed any metallic or non-metallic conductor clip can be attached with the screw provided.

Conductor clip sold separately.



Slate holdfast

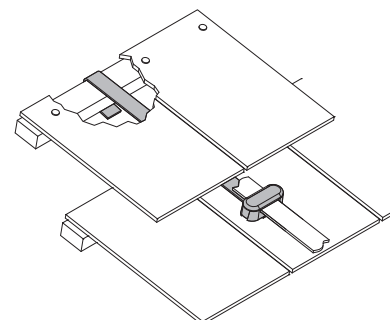
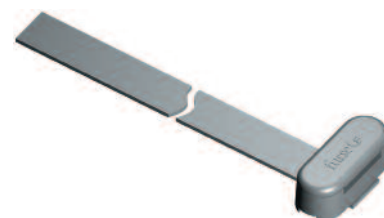
Use with bare tape

Conductor size	DC Clip Colour	Weight each	Part No.
25 x 3mm	Brown	0.06kg	HF015
25 x 3mm	Grey	0.06kg	HF020

Use with PVC covered tape

Conductor size	DC Clip Colour	Weight each	Part No.
25 x 3mm	Brown	0.06kg	HF025
25 x 3mm	Black	0.06kg	HF030
25 x 3mm	Grey	0.06kg	HF040
25 x 3mm	Stone	0.06kg	HF045

Designed to allow tape conductors to be fixed to tiled roofs without compromising the waterproofing nature of the roof. The 500mm tail fits neatly between overlapping tiles and is wrapped around/fixed to the tile lathe for secure fitting.



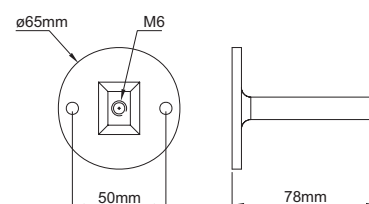
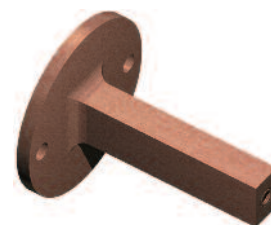
Back plate holdfast stem

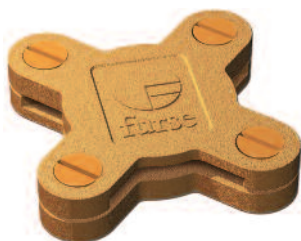
Conductor material	Weight each	Part No.
Copper	0.30kg	HF320
Aluminium	0.10kg	HF325-FU

Supplied with M6 fixing screw to secure appropriate conductor clip.



Fix using roundhead wood screws 1½" No. 10 or M6 (Part no. SW305 or SW405) and wall plugs (Part no. PS305) – see Accessories.





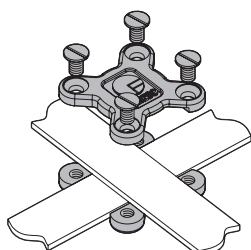
Square tape clamp

	Conductor size	Material	Weight each	Part No.
NEW	25 x 3mm	Copper	0.12kg	CT105-H [†]
NEW	25 x 6mm	Copper	0.30kg	CT110-H [†]
NEW	50 x 6mm	Copper	0.60kg	CT115-H [†]
NEW	25 x 3mm	Aluminium	0.06kg	CT005-H

Manufactured from high quality copper and aluminium alloys. Simple to install, providing an effective low resistance connection between overlapping tapes to allow cross, tee, through and right angle joints to be formed.



BS EN 50164-1 Class H
[†]UL96 (CT105H, CT110-H, CT115-H)



Fix using countersunk wood screws 1½" No. 10 or M6 (Part no. **SW005** or **SW105**) and wall plugs (Part no. **PS305**) – see Accessories.



Tightening torque 5Nm



Oblong test or junction clamp

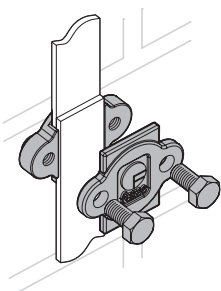
	Conductor size	Material	Weight each	Part No.
NEW	26 x 8mm	Copper	0.29kg	CN105-H [†]
	26 x 8mm	Aluminium	0.12kg	CN005*

Manufactured from high quality copper and aluminium alloys. Simple to install, providing an effective low resistance connection between overlapping tapes. The clamped connection is easily made/remade to allow for periodic testing.

* Not as illustrated



BS EN 50164-1 Class H
[†]UL96 (CN105-H)



Tightening torque CN005 15Nm; CN105-H 13Nm



NEW Crossover clamp

	Conductor size	Material	Weight each	Part No.
	25 x 3mm	Copper	0.09kg	CX105-H
	25 x 3mm	Aluminium	0.03kg	CX005-H

For forming cross joints in tape.



BS EN 50164-1 Class H



Fix using countersunk wood screws 1½" No. 10 or M6 (Part no. **SW005** or **SW105**) and wall plugs (Part no. **PS305**) – see Accessories.



Tightening torque 5Nm

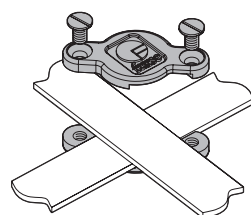


Plate type test clamp

Maximum conductor size	Conductor material	Weight each	Part No.
26 x 12mm	Copper	0.62kg	CT405

Manufactured from a high quality copper alloy. Simple to install, providing an effective low resistance connection between overlapping tapes. The clamped connection is easily made/remade to allow for periodic testing. Enables cross, tee, through and right angle joints to be formed.



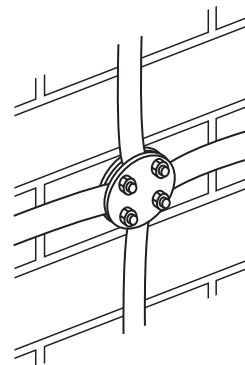
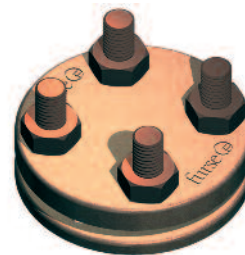
BS EN 50164-1 Class H



Fix using countersunk wood screws 1½" No. 10 or M6 (Part no. **SW005**) and wall plugs (Part no. **PS305**) – see Accessories.



Tightening torque 15Nm



Screwdown test clamp

Maximum conductor size	Conductor material	Weight each	Part No.
26 x 8mm	Copper	0.84kg	CT305

Manufactured from a high quality copper alloy. Simple to install, providing an effective low resistance connection between overlapping tapes. The clamped connection is easily made/remade to allow for periodic testing. Enables cross, tee, through and right angle joints to be formed.



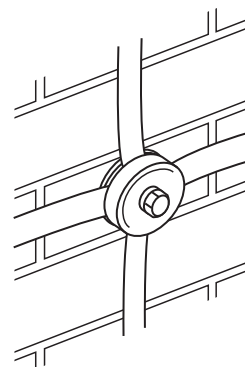
BS EN 50164-1 Class H



Fix using countersunk wood screws 1½" No. 10 or M6 (Part no. **SW005**) and wall plugs (Part no. **PS305**) – see Accessories.



Tightening torque 20Nm



Expansion braid bond

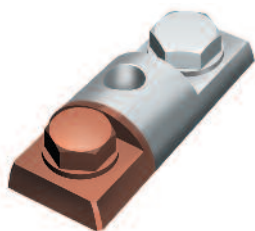
Type	Material	Length	Cross-sectional area	Weight each	Part No.
Single length	Aluminium	200mm	50mm ²	0.07kg	BN001
Single length	Copper	200mm	50mm ²	0.17kg	BN101
Cross-over	Aluminium	300mm	50mm ²	0.23kg	BN002
Cross-over	Copper	300mm	50mm ²	0.53kg	BN102

Designed to remove the risk of damage or distortion to long conductor runs caused by thermal expansion and contraction.

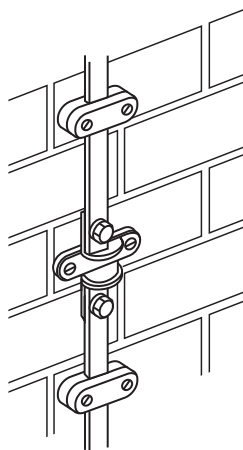




CN910



CN925



Bimetallic connector

Conductor size	Weight each	Part No.
25 x 3mm aluminium tape to 25 x 3mm copper tape	0.19kg	CN910
1" x 1/8" aluminium tape to 1" x 1/8" copper tape	0.19kg	CN910-UL†
8mm diameter aluminium conductor to 25 x 3mm copper tape	0.19kg	CN920
25 x 3mm aluminium tape to 25 x 3mm copper tape	0.20kg	CN925

Manufactured from a friction welded joint between high conductivity copper and aluminium to provide the ideal means of interconnecting copper and aluminium conductors whilst avoiding bimetallic corrosion.



BS EN 50164-1 Class H
†UL96 (CN910-UL)



Fix using countersunk wood screws 1/2" No. 10 or M6 (Part no. SW005 or SW105) and wall plugs (Part no. PS305) – see Accessories.



Tightening torque 12Nm

Oxide inhibiting compound

Description	Weight each	Part No.
Plastic 8oz bottle	0.23kg	CM005



For all the items in this range we recommend the use of oxide inhibitor when aluminium fittings are installed.

Oxide inhibitor is a non-water soluble, natural-petroleum based polymer grease that seals electrical connections from oxygen and moisture.

CoSHH Datasheet available on request.